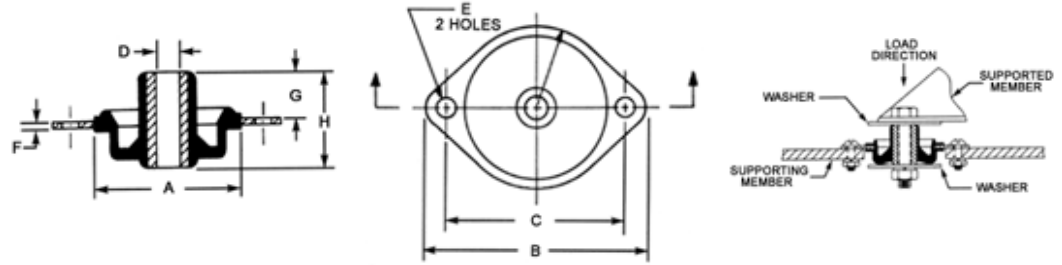




**Vibro-Insulators®**

**Plate Mounts  
(Diamond  
Style)**



Part Number	A	B	C	D	E	F	G	H	Axial Spring Rate LBS/IN	Axial Max. Recommended Deflection	Axial Loads in LBS @ Max. Deflection	Elastomer	Availability
<b>K90-40</b>	1.52"	2.32"	1.94"	.250 / .263"	.165"	.050"	.55"	.97"	22	.18"	4	NATURAL RUBBER	4 TO 6 WEEKS
<b>K90-50</b>	1.52"	2.32"	1.94"	.250 / .263"	.165"	.050"	.55"	.97"	30	.18"	6	NATURAL RUBBER	4 TO 6 WEEKS
<b>K90-60</b>	1.52"	2.32"	1.94"	.250 / .263"	.165"	.050"	.55"	.97"	45	.18"	8	NATURAL RUBBER	4 TO 6 WEEKS
<b>K90-70</b>	1.52"	2.32"	1.94"	.250 / .263"	.165"	.050"	.55"	.97"	70	.18"	12	NATURAL RUBBER	4 TO 6 WEEKS

**Karman Rubber**  
 2331 Copley Road • Akron, OH 44320  
 P: (330) 864-2161 • F: (330)864-2124  
 Web: [www.karman.com](http://www.karman.com)  
 Email: [karman@karman.com](mailto:karman@karman.com)