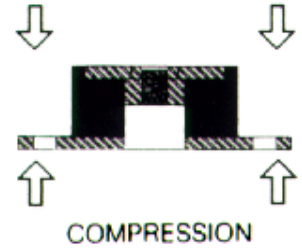
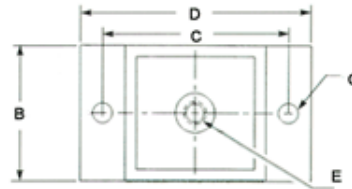
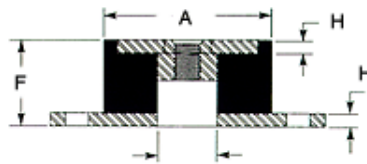
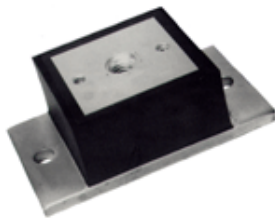




Vibro-Insulators®

Compression Mounts (Machinery Mounts)



Part Number	A	B	C	D	E	F	G	H	Compression Spring Rate LBS/IN	Compression Max. Recommended Deflection	Compression Loads in LBS @ Max. Deflection	Elastomer	Availability
K3-40	3.12"	3.00"	4.12"	5.12"	1/2-13	1.61"	.437"	.25"	3500	.20"	700	NEOPRENE	4 TO 6 WEEKS
K3-40C	3.12"	3.00"	4.12"	5.12"	3/4-10	1.61"	.437"	.25"	3500	.20"	700	NEOPRENE	4 TO 6 WEEKS
K3-50	3.12"	3.00"	4.12"	5.12"	1/2-13	1.61"	.437"	.25"	5500	.20"	1100	NEOPRENE	4 TO 6 WEEKS
K3-50C	3.12"	3.00"	4.12"	5.12"	3/4-10	1.61"	.437"	.25"	5500	.20"	1100	NEOPRENE	4 TO 6 WEEKS
K3-60	3.12"	3.00"	4.12"	5.12"	1/2-13	1.61"	.437"	.25"	8300	.20"	1660	NEOPRENE	4 TO 6 WEEKS
K3-60C	3.12"	3.00"	4.12"	5.12"	3/4-10	1.61"	.437"	.25"	8300	.20"	1660	NEOPRENE	4 TO 6 WEEKS
K3-70	3.12"	3.00"	4.12"	5.12"	1/2-13	1.61"	.437"	.25"	12500	.20"	2500	NEOPRENE	4 TO 6 WEEKS
K3-70C	3.12"	3.00"	4.12"	5.12"	3/4-10	1.61"	.437"	.25"	12500	.20"	2500	NEOPRENE	4 TO 6 WEEKS
K4-40	5.31"	3.00"	6.25"	7.25"	1/2-13	1.63"	.437"	.25"	6000	.20"	1200	NEOPRENE	4 TO 6 WEEKS
K4-40C	5.31"	3.00"	6.25"	7.25"	3/4-10	1.63"	.437"	.25"	6000	.20"	1200	NEOPRENE	4 TO 6 WEEKS
K4-50	5.31"	3.00"	6.25"	7.25"	1/2-13	1.63"	.437"	.25"	7800	.20"	1600	NEOPRENE	4 TO 6 WEEKS
K4-50C	5.31"	3.00"	6.25"	7.25"	3/4-10	1.63"	.437"	.25"	7800	.20"	1600	NEOPRENE	4 TO 6 WEEKS
K4-60	5.31"	3.00"	6.25"	7.25"	1/2-13	1.63"	.437"	.25"	10500	.20"	2100	NEOPRENE	4 TO 6 WEEKS
K4-60C	5.31"	3.00"	6.25"	7.25"	3/4-10	1.63"	.437"	.25"	10500	.20"	2100	NEOPRENE	4 TO 6 WEEKS
K4-70	5.31"	3.00"	6.25"	7.25"	1/2-13	1.63"	.437"	.25"	15000	.20"	3000	NEOPRENE	4 TO 6 WEEKS
K4-70C	5.31"	3.00"	6.25"	7.25"	3/4-10	1.63"	.437"	.25"	15000	.20"	3000	NEOPRENE	4 TO 6 WEEKS

Karman Rubber
 2331 Copley Road • Akron, OH 44320
 P: (330) 864-2161 • F: (330)864-2124
 Web: www.karman.com
 Email: karman@karman.com